



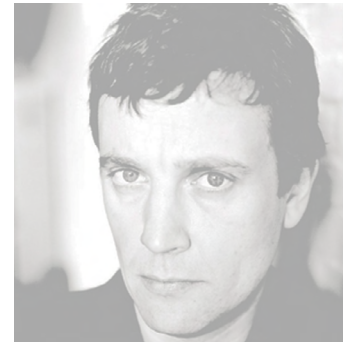
hm213

In a completely fresh approach to public-area seating, Stefan Schöning's **hm213** beam-mounted system introduces a dynamic 'horizon' through the articulation of the height of the backrests. The product range comprises three- and four-seat beams, with or without arms, and an optional table. Beams can be linked end-to-end or in back-to-back configurations. These elements combine to provide a versatile seating solution for waiting and rest areas in retail, healthcare, educational and public sector environments.

The preformed plywood seats are available either with lacquered oak veneer finish, or fully upholstered in a wide choice of fabrics, vinyls and leathers. The armrests can be fitted with an optional upholstered pad for added comfort. Underframes and arms are finished in a pale grey epoxy coating. Tables in solid-core laminate.



oak veneered seats can be fitted with optional upholstered pads



Stefan Schöning, noted for his re-design of the Belgian Railways' corporate identity as well as many furniture, product and architectural designs for clients worldwide, was awarded the coveted IF Designer of the Year in 2008, though he prefers to describe his profession as 'explorer'. Following a number of successful contracts for airport seating in the UK and Europe, Hitch Mylius commissioned the Antwerp-based designer to work on a new seating concept for transport hubs – **hm213** is the result.





hm213

design: Stefan Schöning

w
d
h

w
d
h



1650
616
920

213a



2200
616
920

213e



1810
616
920

213b



2400
616
920

213f



1650
616
920

213c



2200
616
920

213g



1810
616
920

213d



2400
616
920

213h

seat height: 420

Hitch Mylius Limited

Alma House, 301 Alma Road, Enfield, EN3 7BB
t +44 (0)20 8443 2616 / f +44 (0)20 8443 2617
e sales@hitchmylius.co.uk / visit hitchmylius.co.uk